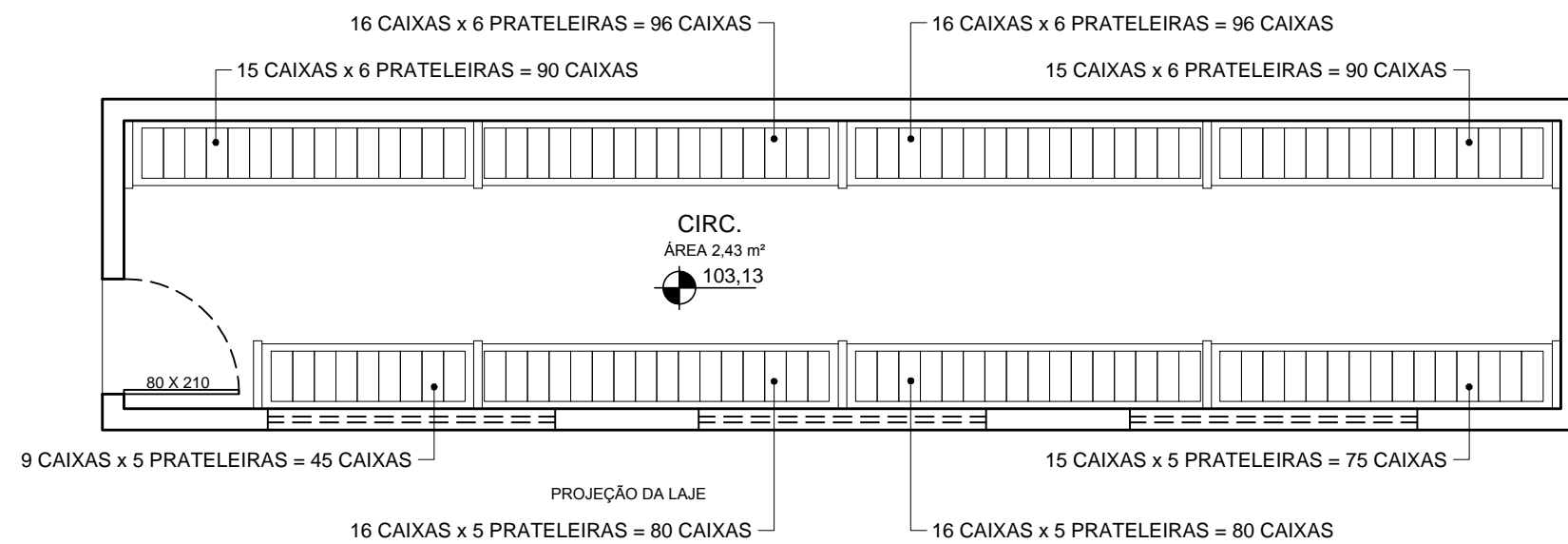
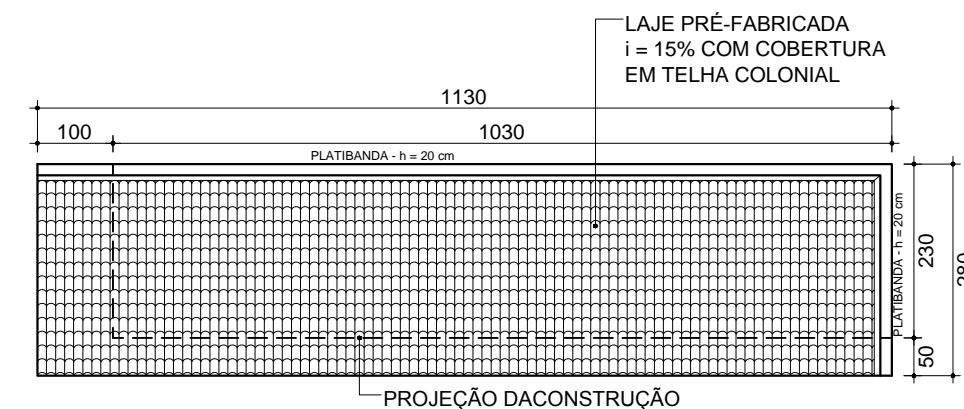


PLANTA BAIXA
 ESCALA - 1/50
 ÁREA - 23,69 m²

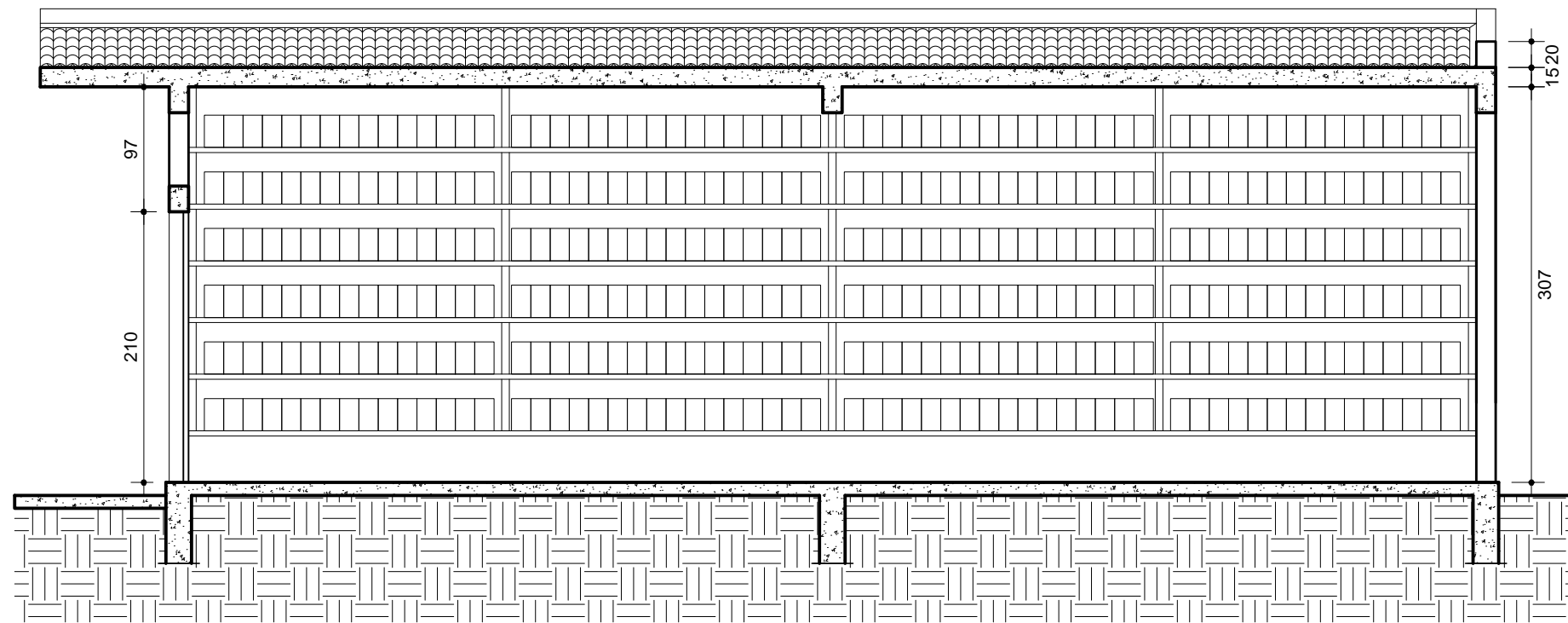
NOTAS:
 TOTAL DE PRATELEIRAS = 44
 TATAL DE CAIXAS ARQUIVO = 652 UNIDADES



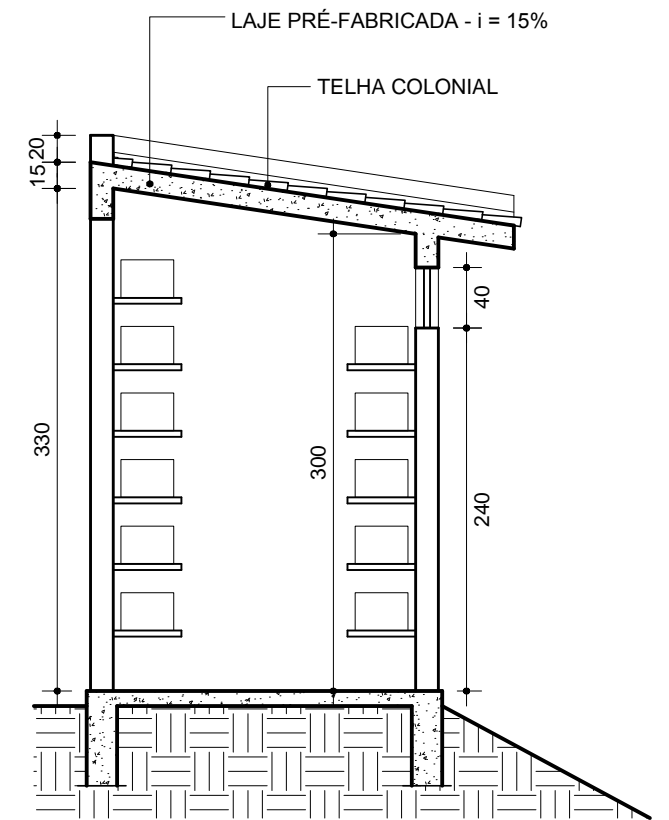
LAY OUT
 ESCALA - 1/50



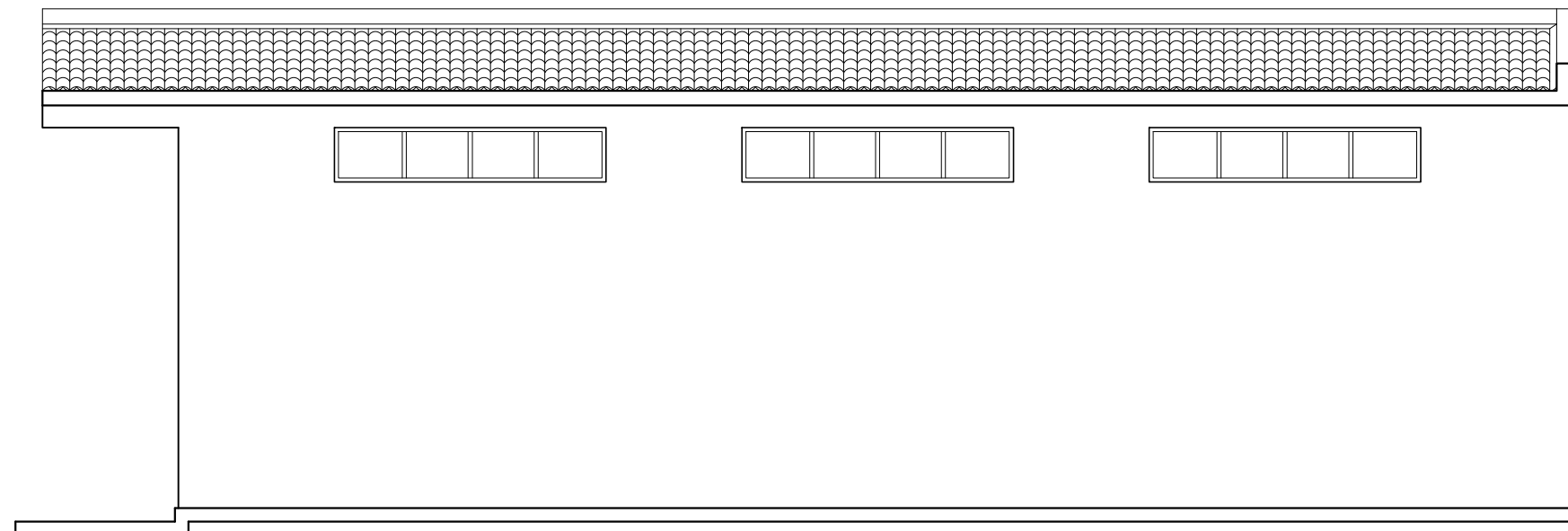
PLANTA DE COBERTURA
 ESCALA - 1/100



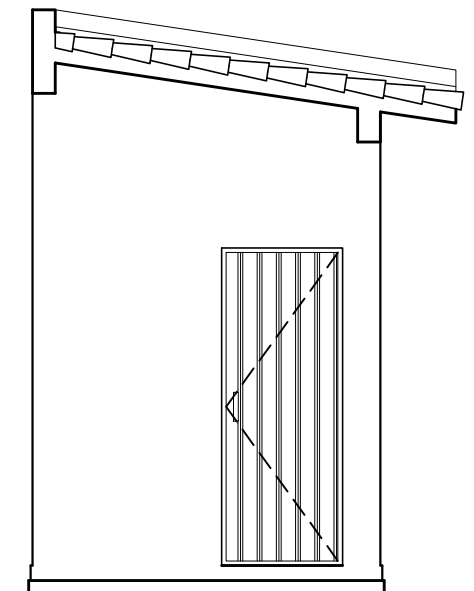
CORTE AA
 ESCALA - 1/50



CORTE BB
 ESCALA - 1/50



FACHADA LATERAL
 ESCALA - 1/50



FACHADA FRONTAL
 ESCALA - 1/50